

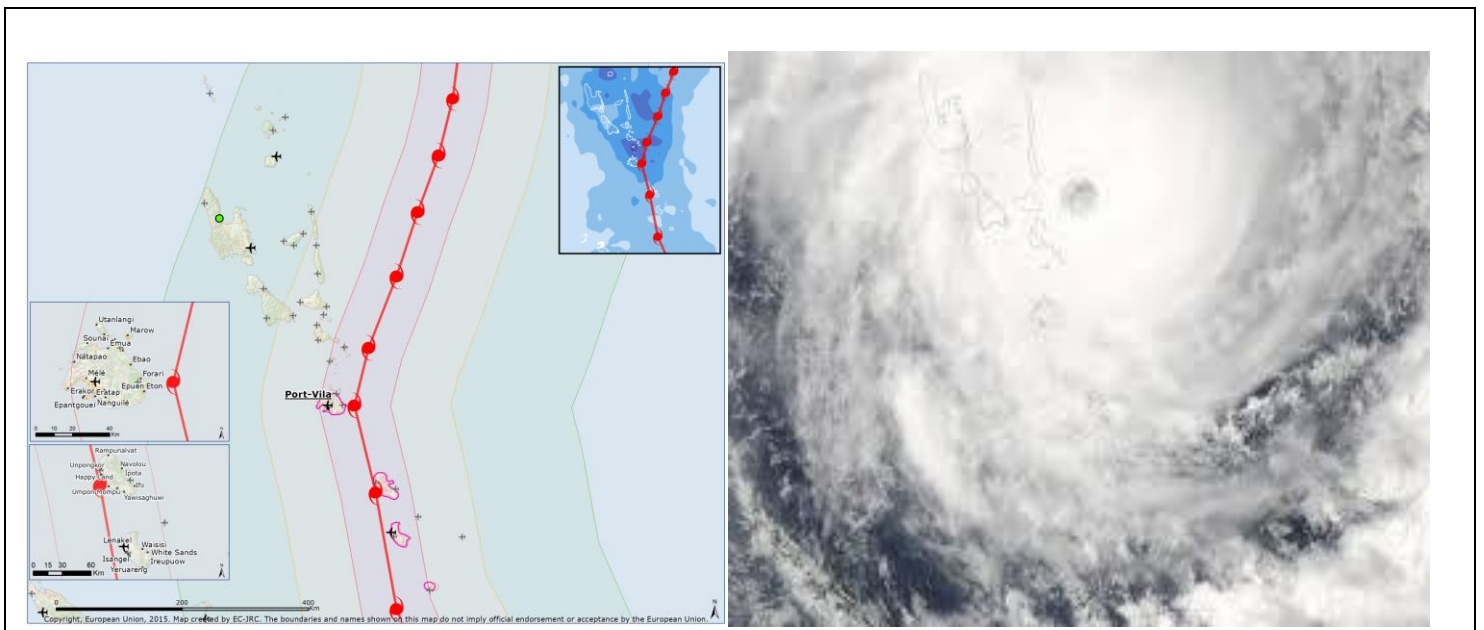


**CYCLONE PAM DAMAGES**  
**PRELIMINARY REPORT**

## **Background**

Cyclone Pam struck Vanuatu on Friday 13th and Saturday 14th March. The category five storm brought winds above 300km/h (185mph) which tore through homes, crops, infrastructure, power lines and telecommunications. Water supplies, roads and bridges have been badly affected by damaging winds, heavy rain, storm surges, flash flooding and debris. As of today, Monday 23th March 2015, Vanuatu Government and UN Joint Office in Vanuatu have been able to establish the following assessment:

- 16 deaths
- 65.000 homeless
- 166.000 persons affected by the cyclone



Cyclone PAM trajectory and satellite picture taken by NASA

Despite serious preparations before the cyclone arrived, nobody could really imagine what destruction this cyclone will bring to us. Like any other community, the Vanuatu Tennis community has been devastated and it is going to take weeks before we catch up with our programs.

This report is a preliminary report presenting the damages caused to our club and the impact of this disaster to our programs. The report presents also what has been done so far to answer to the situation.

## Damages report

We only have one club in Vanuatu and this club has been the place where all tennis development and events occurred in the last 20 years. All our national and regional tennis players trained here and this club has also been the safe place where hundreds of kids from all origins and all backgrounds have grown. Cyclone PAM has destroyed this club. Here is the preliminary assessment of the damages:

Tennis Courts	<ul style="list-style-type: none"> <li>* Fences destroyed by fallen trees;</li> <li>* All lights destroyed by winds; light posts bent by wind;</li> <li>* Surface affected by flood, heavy rain and fallen trees;</li> </ul>
Club House	<ul style="list-style-type: none"> <li>* All external terraces out;</li> <li>* Over 50% of roof sheets out;</li> <li>* Roof framing damaged to entire Club house due to damage and water ingress;</li> <li>* All ceiling out or damaged by water;</li> <li>* Timber flooring damaged by water;</li> <li>* All inside furniture damaged by water;</li> <li>* Electricity system to be fully assessed but considered at the moment as critical. No power yet;</li> <li>* 8 sliding glass doors broken;</li> </ul> <p>Estimated % of damage to Club House: 80%. Permanent concrete structure is OK.</p>
Gym Centre	<ul style="list-style-type: none"> <li>* Parts of the roof sheets and ceiling out and seriously damaged;</li> <li>* Flooring damaged by water;</li> <li>* A number of front louvre glass windows and sliding glass windows have been broken;</li> <li>* Electricity system to be fully assessed but considered at the moment as critical. No power yet;</li> </ul> <p>Estimated % of damage: 90% Permanent structure to be inspected.</p>
Squash area	* Building not affected.
Club green space around club and courts	<ul style="list-style-type: none"> <li>* External fences destroyed or damaged at 60%</li> <li>* Trees, flowers... destroyed at 95%</li> </ul>
Tennis equipment	* All JTI and AOP equipments are safe. None missing.



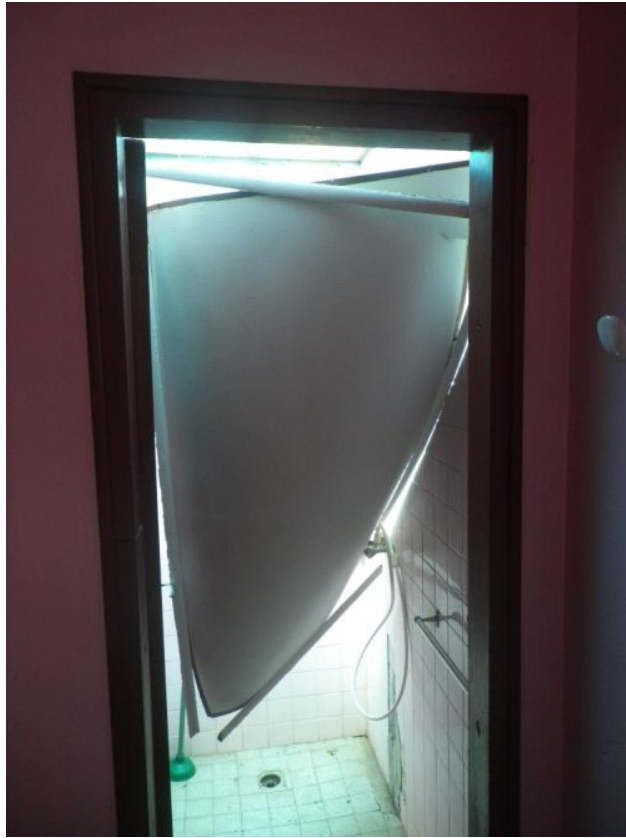
14.03.2015. Club House: external terrace is gone



15.03.2015. Part of the roof blown on to court 3



14.03.2015. Overview



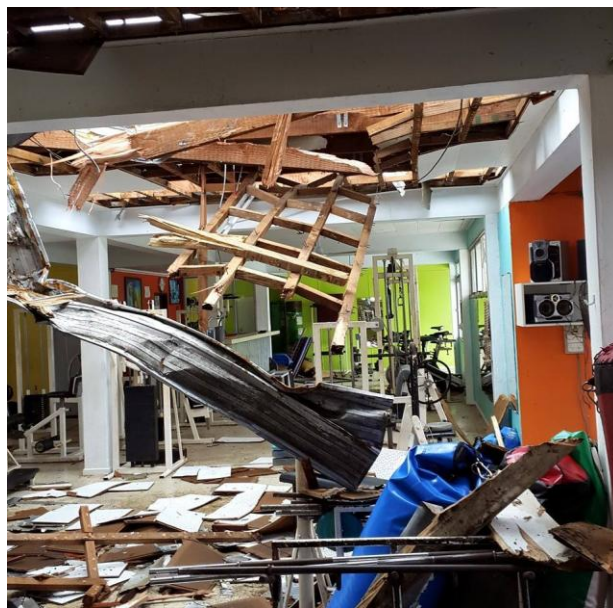
Inside building



Inside club



Light posts bent by wind



16.03.2015. Inside the Gym Centre



16.03.2015. Inside the Gym Centre

### **First responses**

On Monday 16<sup>th</sup> March, teams of volunteers from the junior programs started to clean the club. The following operations have been conducted between 16 and 21<sup>st</sup> March:

- All courts have been cleaned-up. Fallen trees have been removed; all debris fallen on courts taken away. In some parts, fence has been partially straightened-up;
- Building secured; tarpaulins placed on all roofs; inside building dried and secured until next rain;
- Club external space fully cleaned: all debris removed in main area.







### **Impact on programs**

Schedule of tournaments	One tournament delayed. December Regional Tournament could be affected due to sponsor's involvement with reconstruction. Funding diverted to disaster recovery.
Participation of regional tournaments	Participation to West-Pacific Championships, SPG 2015, POJC maintained. Participation to Fiji Open under question mark.
JTI	Schools are either badly affected or used as evacuation centre. JTI program at the Club will be maintained. Activities programmed at schools will be re-directed to the Club.
AOP – Komuniti Program	On hold for one month.
AOP – Kindy	On hold for one month. Ministry of Education will advise us.
AOP – Elite Program	Not affected